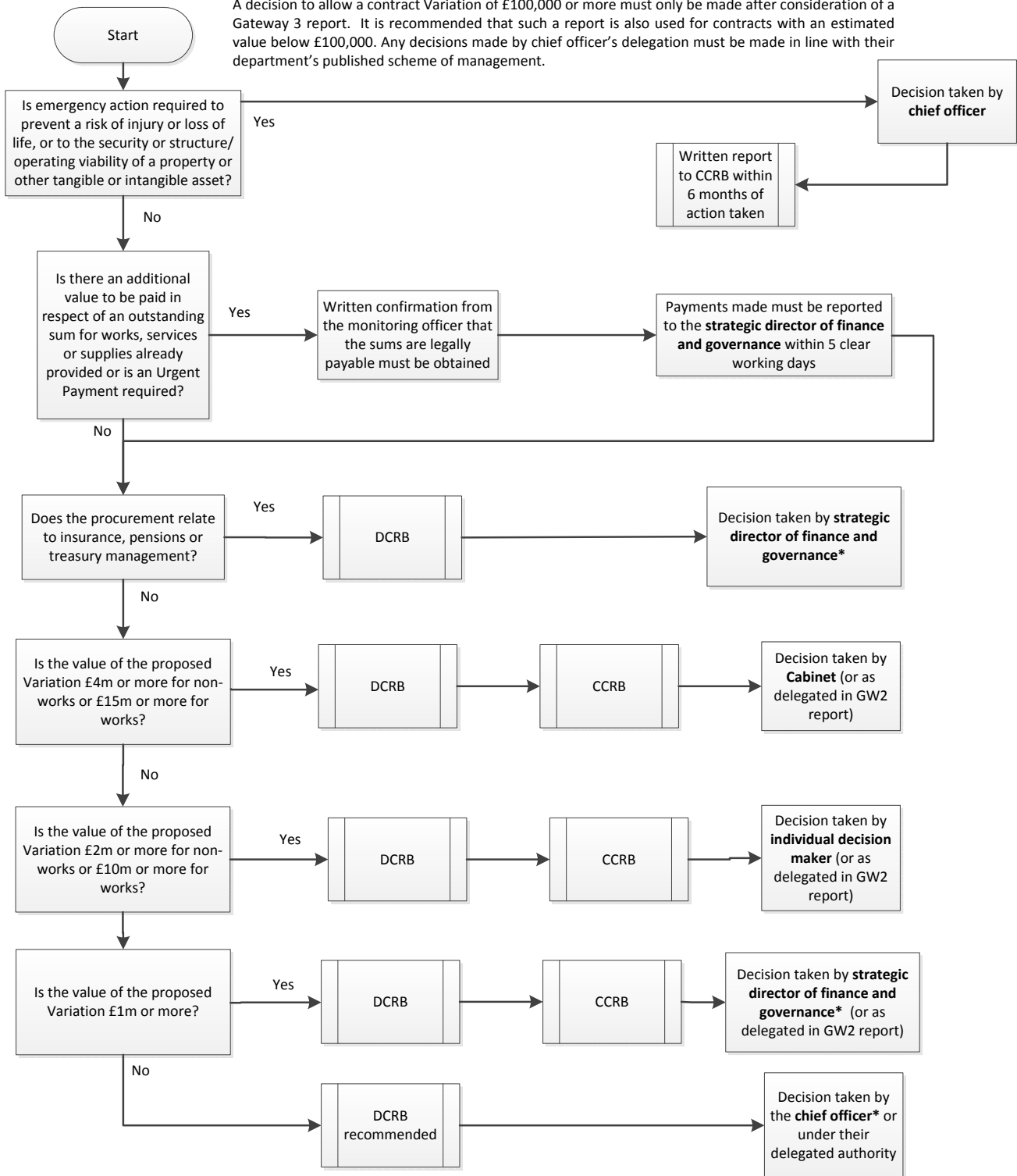


Decision on Contract Variation - GW3

APPENDIX 1d

A decision to allow a contract Variation of £100,000 or more must only be made after consideration of a Gateway 3 report. It is recommended that such a report is also used for contracts with an estimated value below £100,000. Any decisions made by chief officer's delegation must be made in line with their department's published scheme of management.



* All contract Variation decisions with a value of £100k or more should involve a briefing to the individual decision makers before they are implemented